



NEBCO

New England Bio-Community
LEADERSHIP CONFERENCE

101 COLLEGE STREET - NEW HAVEN – CONNECTICUT
April 24, 2025

CONNECT. LEAD. INSPIRE.

NEBCO 2025



101 College Street
New Haven, CT
April 24, 2025

#NEBCO25 

Produced By
NEBCO
Event Services

SPONSORSHIP PROSPECTUS
Updated

March 6, 2025

Dear Valued Sponsor,

We are pleased to invite you to join us as a sponsor at **NEBCO25**, the defining gathering of bioscience leaders from across New England.

Join us on **April 24, 2025**, at **101 College Street in New Haven, CT**, in the heart of the **BIO-HUB** and a national center for innovation in healthcare, biotech, and life sciences.

At NEBCO25, you'll have direct access to the visionaries and organizations shaping the future of our industry. This is your opportunity to position your brand, build lasting partnerships, and engage with key decision-makers, driving what's next in biosciences and healthcare.

Why NEBCO25:

Connect with more than 100 industry leaders, including **C-suite executives, investors, policymakers, healthcare AI specialists, and data analytics innovators.**

Showcase your thought leadership with exclusive speaking opportunities, panel participation, and targeted track sponsorships.

Maximize your business development through our signature **Match-Maker Experience (MME)**, a **NEBCO25** personalized program that pairs sponsors with our high-value attendees based on shared interests and business goals. The MME ensures intentional, strategic connections through curated introductions, private meetings, and facilitated B2B networking designed to deliver measurable outcomes.

Showcase your company and products through **high-impact marketing spaces**, designed to put your brand in front of key industry leaders with integrated digital and onsite visibility.

Drive meaningful growth by engaging directly with the innovators and decision-makers shaping the future of biosciences and healthcare.

What's New for NEBCO25:

Explore expanded sponsorship packages designed to align with your goals, including: Platinum, Gold, and Silver Sponsorships with turnkey marketing spaces.

Focused track and session sponsorships covering critical topics such as digital health, workforce strategy, and financial excellence.

High-profile networking event sponsorships and premium digital branding opportunities.

Reserve Your Place

Sponsorships are limited. Secure your package by **March 15th** to receive a **5% discount**.

To discuss availability, remaining sponsorship options, or to create a custom package that aligns with your company's mission, please contact **James Cash** at James@NEBCO.org or **203-980-3494**.

We look forward to welcoming you to NEBCO25 and working together to advance the future of biosciences and strengthen your ROI.

Sincerely,
James Cash
NEBCO.org

Why New England . . . !

The New England Bio-Community Leadership Conference / NEBCO 2025 is a pivotal event for companies interested in collaborating with New England's bioscience and lifescience companies and organizations. This region is recognized for its synergistic environment that fosters strong connections between academia, industry, and healthcare providers, positioning it as a hub for biomedical research and development. Attending this conference will not only offer valuable networking opportunities with key players in these sectors but also provide insights into cutting-edge developments in bioscience. This makes the conference a must-attend for those aiming to engage with and benefit from New England's dynamic bioscience community.

New England has rapidly emerged as a major hub for biopharma, biotech, and biomedical industries, largely due to the dense concentration of world-class universities, hospitals, research institutions and financial institutions spread across key cities such as Boston, MA, New Haven, CT, and Providence, RI.

New Haven is a hub for the biomedical industry largely due to the presence of Yale University and its medical school, which are centers for medical research and innovation. The city hosts numerous biomedical startups and established companies that benefit from collaboration with Yale's research facilities and talent pool. This ecosystem is supported by substantial investment in biotechnology and healthcare sectors, making New Haven a key player in advancing medical science and technology.

Boston is a major hub for the biomedical industry due to its dense concentration of world-class universities, hospitals, and research institutions, such as Harvard University and Massachusetts General Hospital, which foster innovation and talent development. The city benefits from substantial venture capital investment, which supports a thriving ecosystem of biotech startups and established companies, driving advancements in biotechnology and pharmaceuticals.

Providence is a significant hub in the biomedical industry, primarily due to its robust educational infrastructure, including renowned institutions like Brown University and its Warren Alpert Medical School. These institutions not only produce top-tier research but also foster a skilled workforce that supports innovation and growth in the biomedical sector. Additionally, the city benefits from collaborative networks that link academia, industry, and healthcare systems, enhancing its capacity for biomedical research and commercialization.

Additionally, **Maine, New Hampshire, and Vermont**, though smaller players, are increasing their stake in these industries through focused investments in education and infrastructure to support biotech startups and research, **further enhancing New England's role as a leading area for life sciences.**

That's Why...!

CONNECT. LEAD. INSPIRE.

NEBCO Match-Maker Experience / MME

Take your networking to the next level with the **NEBCO25 Match-Maker Experience (MME)**, a curated program designed to connect companies with solution providers through **12-minute, high-impact meetings**. This exclusive feature ensures every interaction is purposeful, strategic, and results-driven.

How the MME Works:

- **Pre-Qualified Matching:** Participants are paired based on shared business needs and areas of expertise.
- **12-Minute Targeted Meetings:** Focused, efficient conversations designed to identify solutions and explore opportunities.
- **Strategic Outcomes:** Meetings are designed to deliver actionable next steps and foster long-term partnerships.
- **Exclusive Access:** Connect directly with key decision-makers, innovators, and industry leaders shaping the future of biosciences.

Why Participate?

The Match-Maker Experience delivers:

- ✓ Pinpointed, high-value connections.
- ✓ Opportunities to address specific challenges.
- ✓ A platform to showcase innovative solutions.
- ✓ A direct path to meaningful collaborations.

Elevate your conference experience with the MME. where purposeful meetings turn into lasting results.

COME TO CONNECT

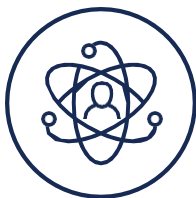


A variety of NEBCO Leadership Conference engagement opportunities offer broad exposure and targeted interaction with senior hospital executives, trustees and next-generation health care leaders. We don't restrict sponsor and exhibitor access to conference programming. As an important member of the NEBCO ecosystem, you are invited and encouraged to participate in all NEBCO Leadership Conference activities which provide outstanding access to attendees, educational opportunities for your own executives and a high degree of visibility at this essential thought leadership meeting.



YOUR OPPORTUNITY TO TAKE THE LEAD

Engage directly with biopharma, biotechnology, biomedical and health systems leaders who need innovative approaches for delivering better care and greater value, ensuring financial stability, addressing workforce challenges and improving the health care consumer experience through operational excellence, creative partnerships and redefined delivery models.



INSPIRE NEW RELATIONSHIPS THAT SHAPE THE LANDSCAPE OF HEALTH CARE

Health leaders use the NEBCO Leadership Conference as a key source for inspiration and applicable strategies to support sustainable transformation in their organizations, systems and communities. Your organization can become part of the narrative by sharing services and solutions that address these critical focus areas:

mRNA & RNA-Based Therapeutics / AI & Machine Learning in Drug Discovery / Cell & Gene Therapy Innovations

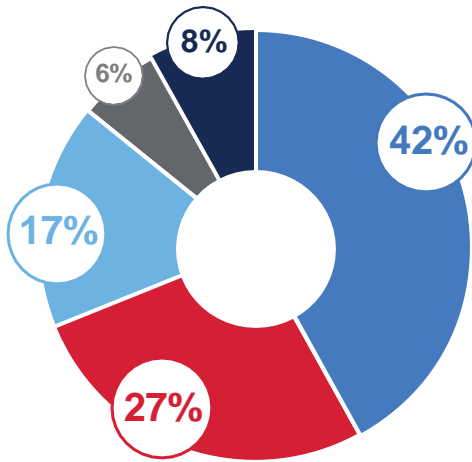
Biomanufacturing & Supply Chain Resilience / Precision Medicine & Personalized Therapeutics

Digital Health & Telemedicine Integration / Health Equity & Global Access to Medicine / Sustainability & Green Biotech

Microbiome & Gut-Brain Axis Research / Robotics & Automation in Life Sciences

ATTENDEE DEMOGRAPHICS

100 + PARTICIPANTS FROM THE PROVIDER, ACADEMIC AND BIOSCIENCE BUSINESS COMMUNITIES



Representation from provider audience:

- 27% C-Suite
- 17% CEO
- 42% VP/Director/Manager
- 8% Clinical Leader
- 6% Board Member



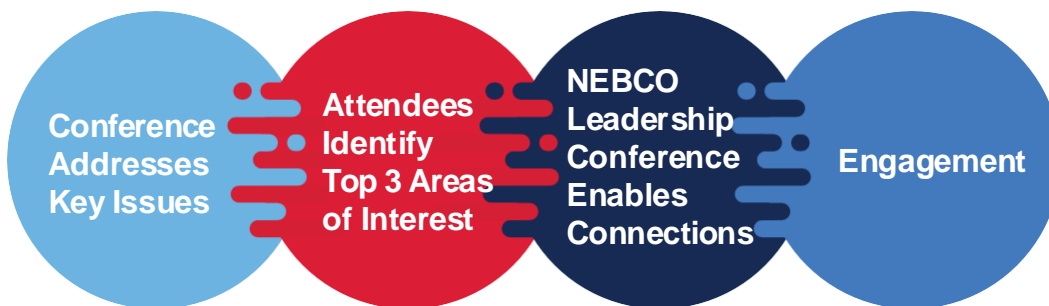
44%

of provider attendees represent C-Suite (CEO + Chiefs)

MEET FACE-TO-FACE WITH KEY LEADERS FROM NEW ENGLAND'S BIOPHARMACUTICAL, BIOTECHNOLOGY, BIOMEDICAL, HOSPITALS AND HEALTH SYSTEMS AT THIS NOTABLE VIP EVENT.

HOW ARE WE MAKING THE CONNECTION?

The NEBCO Leadership Conference programming addresses selected interest areas known to be of interest to NEBCO attendees. We will work to connect sponsors with conference attendees around these key areas. In order to establish that connected experience we will ask all attendees for their top 3 areas of interest, as well as each sponsor on behalf of their organizations. This will enable us to streamline the engagement process for all attendees, by **leading** and **connecting** NEBCO members with the solutions relevant to their needs. Customized promotions, sponsor listings by category and educational sessions in the Innovation Hub are just a few ways we will **inspire** relationships as we transform the conference experience.



EXHIBITOR & SPONSORSHIP OPPORTUNITIES

GET YOUR BRAND IN FRONT OF KEY HEALTH CARE DECISION MAKERS.

INVESTMENT

We offer a range of options to fit your organization's goals and budget.

PLATINUM SPONSOR (WITH TURNKEY MARKETING LOUNGE) **\$10,000**

BENEFITS INCLUDE:

- 6 Complimentary Registrations
- 8' X 10' Turnkey Marketing Space Includes:
 - (2) Retractable Banner w/ Company Info and Logo (yours to keep – Sponsor provides artwork)
 - 8' Table w/ 4 Chairs
 - Coffee + Beverage Service (water and soft drinks)
 - 1 - 60" Monitors on Stand (no laptop)
 - Electricity and Wastebaskets
- Pre & Post Event Attendee lists with Email Addresses (One-time use each)
- Logo and Link on Website
- Logo on On-site Signage
- Logo and Link in at least one Pre Conference Email
- Logo and Link in at-least one Post Conference Email
- Sponsor can provide their own exhibit or work with NEBCO

GOLD SPONSOR (WITH TURNKEY EXHIBIT BOOTH) **\$7,500**

BENEFITS INCLUDE:

- 6 Complimentary Registrations
- 8' X 8' Turnkey Marketing Space Includes:
 - (1) Retractable Banner w/ Company Info and Logo (yours to keep - Sponsor provides artwork)
 - 8' Table
 - 4 Chairs
 - Electricity
- Pre & Post Event Attendee lists with Email Addresses (One-time use each)
- Logo and Link on Website
- Logo, Link and Company Description on Mobile App
- Logo on On-site Signage
- Logo and Link in at least one Pre Conference Email
- Logo and Link in at-least one Post Conference Email

SILVER SPONSOR (WITH TURNKEY MARKETING SPACE) **\$5,000**

BENEFITS INCLUDE:

- 4 Complimentary Registrations
- 8' X 8" Turnkey Marketing Space Includes:
 - 8' Table
 - 2 Chairs
 - Company Logo / Sign
 - Electricity
 - Wastebasket
- Summit Attendee Pre-event Mailing List (Email Addresses included)
- Logo and Link in at least one Pre Conference Email
- Logo and Link in at-least one PostConference Email

TABLETOP SPONSOR **\$2,200**

BENEFITS INCLUDE:

- 2 Complimentary Registrations
- 8' Table with Company Sign/ Logo:
 - Two Chairs
 - Electricity
 - Wastebasket
- Summit Attendee Pre-event Mailing List (Email Addresses NOT included)
- Mobile app listing

SPONSORSHIP OPPORTUNITIES

Become a Sponsor or Exhibitor by March 15th and receive a 5% discount + 2 additional registrations

WE OFFER A RANGE OF SPONSORSHIP OPTIONS to allow you to create the package that fits your needs and budget.

TRACK SPONSOR INCLUDES TABLETOP SPONSOR AMENITIES W/ MAILING LIST

INVESTMENT

4 COMPLIMENTARY REGISTRATIONS

\$6,000

Align your brand with specific topics/issues to appeal to a target audience that is demonstrating a particular interest connection with your solution. Also includes:

- Lead scanner to track attendees at your sessions.
- Seat drop for all sessions in the track. Seat drop is responsibility of sponsor to print, ship and place on seats.

2025 SESSION TRACKS

This year's conference will focus on key industry topics, including:

- ✓ Workforce and Talent Development
- ✓ Digital Transformation & AI in Biotech
- ✓ Health Equity & Patient-Centered Innovations
- ✓ Operational & Financial Excellence
- ✓ Cutting-Edge Drug Development and Biomanufacturing

To Secure Your Sponsorship
Contact
James@NEBCO.org

SPECIAL SPONSORSHIP OPPORTUNITIES CONTINUED

Become a Sponsor or Exhibitor by March 15th and receive a 5% discount + 2 additional registrations

EDUCATIONAL SESSIONS INCLUDES TABLETOP SPONSOR AMENITIES W/ MAILING LIST

INVESTMENT

PARTNER PROGRAMMING SPONSOR

\$5,000

Sponsor creates one educational session in collaboration with the NEBCO to occur during the conference. Session content must be noncommercial in nature, support the program's theme and focus areas and be approved by NEBCO. Partner develops presentation and recruits hospital/health system panelists or notable SMEs with the option to include an executive as a session speaker. Sponsor will receive premium placement of logo/company name in promotional materials and sponsored session sign.

Sponsor receives 2 additional complimentary registrations to their supporting allotment.

SPONSORED PANEL

\$6,000

Sponsor provides one participant in an educational session co-developed by Sponsor and NEBCO. NEBCO will set the topic and session description and identify the NEBCO moderator and speakers (approximately 2).

Sponsor receives the following:

- Sponsor can select one of the predetermined panel topics listed to the right.
- Sponsor provides one executive thought leader to participate in panel discussion (individual must be approved by NEBCO).
- Sponsor participant included in the pre-event planning call with the NEBCO moderator and speakers.

Potential Topics:

- Managing Population Health
- Enhancing Patient Experience
- Artificial Intelligence in Healthcare
- Digital Health and Telemedicine
- Precision Medicine and Genomics

Please note: Product offerings and meeting agenda are subject to change.

Sponsor receives 2 additional complimentary registration to their supporting allotment.

To Secure Your Sponsorship Today
Contact James@NEBCO.org

SPECIAL SPONSORSHIP OPPORTUNITIES CONTINUED

Become a Sponsor or Exhibitor by March 15th and receive a 5% discount + 2 additional registrations

INCLUDES ALL THE BENEFITS OF A TABLETOP SPONSOR

Please note: Product offerings and meeting agenda are subject to change.

NETWORKING EVENTS with Gourmet Foods and Local Treats by Georges Café INVESTMENT

CONTINENTAL BREAKFAST, NEW HAVEN STYLE

\$6,000

Start the day right with coffee from **Willoughby's New Haven** and bagels and pastries from **East Rock Breads**.

Sponsorship includes:

Acknowledgment on event signage

Logo on tabletop tent cards and napkins

Featured signage in the breakfast area with your thought leadership (pending NEBCO approval)

WORKING EXECUTIVE LUNCH

\$8,000

Showcase your brand during our gourmet **"bagged" lunch from Café George, New Haven**, served to attendees for a convenient, efficient and delicious dining experience.

Sponsorship includes:

Logo on event signage, tabletop tent cards, and napkins

Opportunity to present your company on the main stage to kick off the Match-Maker

Featured brand presence throughout the lunch service

COFFEE BREAKS

\$3,500

Stay Keep the energy going with sponsorship of **three coffee breaks**, featuring **Willoughby's locally roasted coffee**.

Sponsorship Includes:

Logo on signage, tabletop tent cards, and napkins

Featured signage with your thought leadership (pending NEBCO approval)

Fuel the conversation. Keep leaders energized. Put your brand at the center of every coffee break.

CLOSING RECEPTION, NEW HAVEN STYLE

\$10,000

Close out NEBCO 2025 with a signature New Haven experience, featuring **beer sampling from the New England Brewing Company**, **regional wines**, and **gourmet samplings from Café George**.

Sponsorship includes:

Opportunity to present your company on the main stage to kick off the **Reception**

Acknowledgment on event signage and logo on napkins

Featured brand presence throughout the reception and Thought leadership signage in high-traffic areas (pending NEBCO approval)

Position your brand at the center of this high-energy, can't-miss networking celebration highlighting the very best of New Haven's dining and craft beverages scene.

Sponsors receives 4 additional complimentary registration to their supporting allotment.

SPECIAL SPONSORSHIP OPPORTUNITIES CONTINUED

Become a Sponsor or Exhibitor by March 15th and receive a 5% discount + 2 additional registrations

INCLUDES ALL THE BENEFITS OF A SUPPORTING SPONSORSHIP

Please note: Product offerings and meeting agenda are subject to change.

ADDITIONAL SPONSORSHIP OPPORTUNITIES

INVESTMENT

CONFERENCE LANYARDS

\$2,500

Sponsor logo printed on name badge lanyards distributed to attendees at registration.

Please Note: This is not a stand-alone sponsorship. This is an add-on to any existing sponsorship secured

TOWER SIGN

\$1,500

Unique opportunity to display your organization's initiatives / values / accomplishments on an 8 ft.x 3ft graphic panel tower placed in a high traffic area of the conference. You will receive one full side of the structure and NEBCO will manage production and placement. (Creative requires NEBCO approval – Sponsor provides artwork).

ATTENDEE ONLY and \$150 per registrant.

*STUDENT ATTENDEE \$10 per registrant

(Available w/ valid college ID)

**Proceeds from the Student Registration will be Donated to the*

Community Foundation for Greater New Haven Basic Needs Fund

To Secure Your Sponsorship Contact
James@NEBCO.org